

# NetIQ SecureLogin

*Simplified secure authentication*

NetIQ® SecureLogin is one of the leading single sign-on (SSO) products on the market today. It allows users to access local and network resources using a single set of credentials. When users log into a desktop, NetIQ SecureLogin automatically authenticates them to all of their applications and resources. With only one password to remember, users no longer need to write them down; create ones that are weak so they're easy to remember, or call helpdesk for resets when they forget them. NetIQ SecureLogin virtually eliminates password-related calls to the helpdesk, letting IT administrators focus on new, value-added projects while end users focus on doing their jobs instead of remembering passwords.

Organizations in healthcare and other high-security environments use NetIQ SecureLogin to integrate their smart cards, proximity cards and biometric devices with their applications and resources to create an optimal user experience that is both easy and fast.

## Product Overview

NetIQ SecureLogin allows your organization to strengthen its password policies. With NetIQ SecureLogin, you can require your users to have more secure, or even randomly generated, passwords rather than passwords that are simply easy to remember. Because NetIQ SecureLogin

delivers out-of-the-box integration and onboarding technology, organizations with smart cards, proximity cards and biometric devices can have it up and running in days, not weeks. NetIQ SecureLogin can also offer remote users password policy enforcement or an enhanced user experience for advanced authentication devices, whether the users are connected to the corporation's authentication services or not.

NetIQ SecureLogin does not require back-end servers or infrastructure additions, so it is quicker and less expensive to deploy than competing solutions. This provides industry-leading time to value. And with its broad, built-in support for applications and its script-free integration wizard, connecting it to applications is a simple, automated process. As a result, you can deploy NetIQ SecureLogin in a matter of days.

A redesigned interface simplifies your installation and administration and provides integration with NetIQ's other identity and access management products, such as NetIQ Identity Manager, NetIQ Access Manager™ and NetIQ Sentinel™. Your IT staff can centrally manage credentials and policies as well as monitor SSO activities. Administrators can easily grant application access by user or group and set preferences on what users may view and edit.



## SOLUTION

Access Management

## PRODUCT

NetIQ® SecureLogin

*"We use NetIQ SecureLogin to control access to 30 applications, and the integration was nearly seamless. Our users now have just one username and password to memorize; NetIQ SecureLogin sets and manages the passwords to the individual applications, keeping a very high level of security."*

## Rudolf Fink

Head of IT  
SVB

## Capabilities

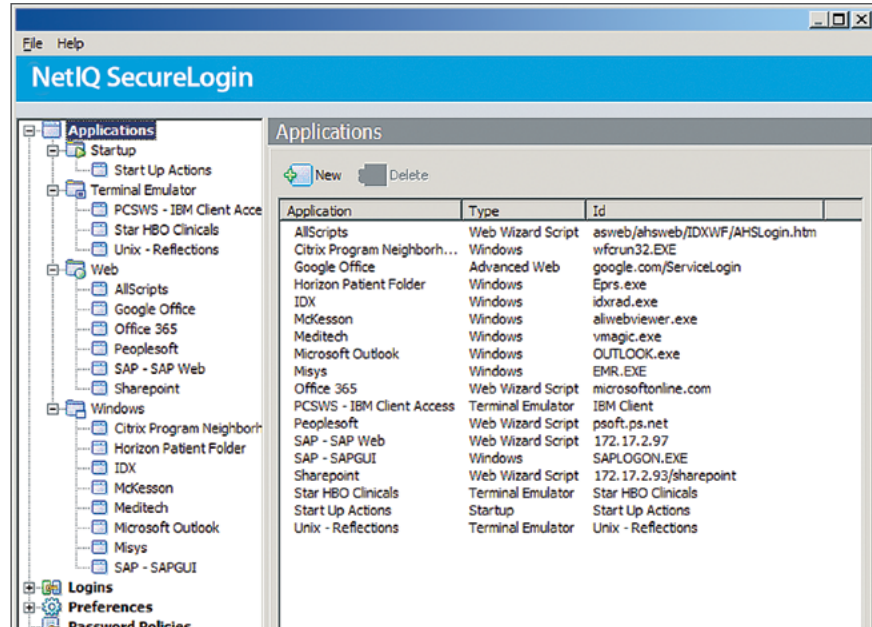
NetIQ SecureLogin delivers unique functionality that provides quick time to value and tight integration with NetIQ's industry-leading identity and access management solutions. NetIQ SecureLogin allows you to:

- Unique architecture that has no rip-and-replace requirements
- Provide fast and easy user access for environments with advanced authentication devices.
- Integrate applications quickly using an extensive list of preconfigured application integrations or a built-in integration engine.
- Support a central, robust password policy for all applications.
- Always provide a SSO experience for portable devices, even when they are not connected.
- Use NetIQ SecureLogin alone or integrate it with other NetIQ identity and access management solutions.

## Features

Its rich feature set makes NetIQ SecureLogin an industry leader for intelligent access:

- **Advanced authentication** – supports multiple login methods for most smart cards, proximity cards and token-based or biometric authentication devices



NetIQ SecureLogin delivers the market's most comprehensive graphical integration wizard with support for Windows, Web, Java and enterprise applications.

- **Fast user switching** – makes sure that the previous user is logged out before the next person uses the workstation, a requirement for fast and secure movement between devices
- **Multi-directory support** – provides support for Microsoft Active Directory, NetIQ eDirectory™ or generic Lightweight Directory Access Protocol (LDAP) directories
- **Application wizard** – enables fast, script-free integration for applications that NetIQ SecureLogin does not already support via a GUI-based wizard
- **Self-service password administration** – lets users reset their passwords or unlock their accounts without calling the helpdesk

To learn more about NetIQ NetIQ SecureLogin, or to start a trial, go to [netiq.com/securelogin](http://netiq.com/securelogin).

### Worldwide Headquarters

1233 West Loop South, Suite 810  
Houston, Texas 77027 USA  
Worldwide: +1 713.548.1700  
U.S. / Canada Toll Free: 888.323.6768  
info@netiq.com  
www.netiq.com  
<http://community.netiq.com>

### For a complete list of our offices

in North America, Europe, the Middle East, Africa, Asia-Pacific and Latin America, please visit [www.netiq.com/contacts](http://www.netiq.com/contacts).

Follow us:

